



Hörmann Steel Entrance Door HR60S

High quality doors to protect your home



Wherever you are, there's always a warm place
with a warm light and opening door for you

CATALOGUE

Good Reasons to Try Hörmann	1
Steel Entrance Door HR60S	3
Decoration Frame	7
Hardware and Optional Extras	8
Smart Locks	9
Surface Finishes	11

All rights reserved. No part or excerpt may be reproduced without our prior permission. Subject to changes.
The surface finishes and colors shown are subject to the limitations of the printing process and cannot be regarded as binding.

Good Reasons to Try Hörmann



German Quality

Hörmann has been sticking to German rigorous professional attitude since entering Chinese market from Germany in 1998, constantly improving product details, maintaining technical research and development Innovation. Hörmann has deeply cultivated the Chinese market and won the trust and respect of our customers by excellent product quality and good service.



Green Initiative

Hörmann integrates the concept of green and environmental protection into all production chain, selects raw materials with strict environmental criterion, and strictly controls the entire production environment under international standards. Hörmann has been awarded the ISO14001 Environmental Management System Certification.



Safety and Reliability

All aspects from product development, design, production, manufacturing, and transportation are strictly controlled by the ISO 9001 quality management system, ensuring excellent product quality and providing good entrance doors.



Sustainability

Hörmann constantly insists on providing high quality steel doors for the market, which are durable and sturdy. The core material has high value of reusability and recyclability, helping to reduce the consumption of forest resources and continue sustainable beauty of nature.

Security

Hörmann security entrance door is highly qualified from steel sheet to infill, from hardware to surfaces, to act as private safe-guard for your home.



Fire Resistance

The entrance door of high-rise residential buildings requires not only anti-burglar safety, but also fire-rated safety. An anti-burglar entrance door with fire-rated function is the first line of defence to your home in case of fire, preventing the flame and toxic smoke from entering your home and harming your family members.



Sound Insulation

Privacy and freedom from external distraction are another consideration for living comfort. Hörmann entrance door has very good performance on acoustic insulation thanks for the optimized structure design and selected infill and multiple seals around, allows you to enjoy a peaceful and comfortable quality of life everyday.



Thermal Insulation

The advantage of Hörmann entrance door is not limited to safety, but also outstanding on thermal insulation, which means less air leakage and heat conduction, so that leads to good performance on energy conservation and consumption reduction.





DEC2016 Wide Grained Mahogany Surface



DEC2010 Cassia Siamea Surface



Steel Entrance Door HR60S

Hörmann Steel Entrance Door HR60S concentrates on the practical needs of residential entrance doors, simultaneously meet the requirements of five protective functions: fire-rated and burglar-proof function, thermal insulation, sound insulation, and airtightness. It serves as the first guarding line of your home.

The HR60S steel entrance door is made of high quality Q235 steel sheet in accordance with Chinese standard and selected hardware. The interior of the door leaf is filled with specified fire-proof board, providing long-term protection and companionship.

- Standard fire-rated level: class A (in accordance with GB 12955-2008)
- Standard burglar-proof level: class C (in accordance with GB 17565-2007)
- HR60S door with fire-rated class A and burglar-proof class B is optionally available according to customer needs.



Technical Data

Fire-Proof Level	Class A (90 min. heat insulation and integrity)
Burglar-Proof Level	Class B and C
Thermal Insulation	1.8 W / (m ² ·K)
Acoustic Insulation	38 dB
Air Tightness	GB/T 7106-2019)
Leaf Thickness	62 mm
Leaf Steel Sheet Thickness	1.0 mm for class B, 0.8 mm for class C
Frame Depth	85 mm
Frame Steel Sheet Thickness	2.0 mm
Hinge	3D adjustable hinge
Handles	Lever/knob handle set F100 (standard) Lever/knob handle set F200
Size limitation	Single leaf 1200 x 2400 mm Double leaf (asymmetrical) 1500 x 2300 mm



Fire-Proof Infill

A complete fire proof board infilled, stable and provide more fire protection.



Fire-Proof Expansion Sealing

Dual fire-proof sealing in multi chamber design expands and seals the gap between leaf and frame during fire, stops the flames and smoke from spreading.

Pinaster Surface

Not only a line of defense, but also a landscape.



Moon Grey Surface

German
Quality

Fire and
Burglar
Proof

Professional
Design

Authoritative
Certification



Fire-rated
standard
GB 12955-2008



Burglar-proof
standard
GB 17565-2007



Acoustic insulation
standard
GB/T 8485-2008



Thermal insulation
standard
GB/T 8484-2020

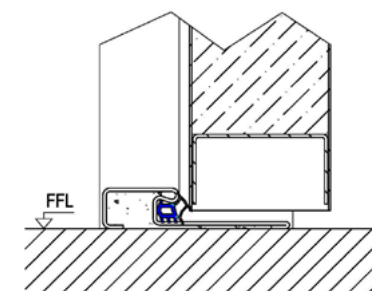
Dual Environmental Certification

The core materials of the HR60S steel entrance door, such as steel sheet and surface finishes, meet the environmental protection requirements of EU 2011 / 65 / EU (RoHS2.0); the smoke toxicity of the leaf infill in high-temperature meets the national standard ZA2 level.

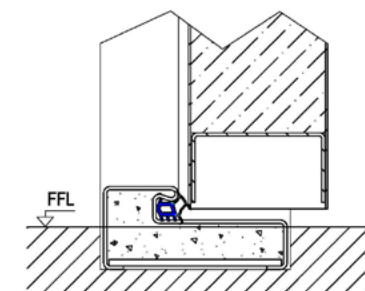


RoHS2.0 Certification

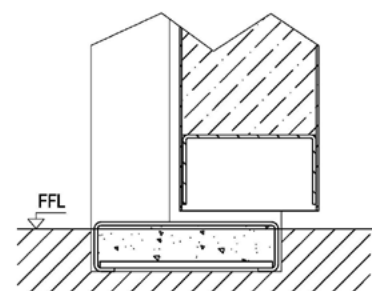
Bottom Sealing



3 mm bottom frame with seal
Standard for galvanized steel,
SUS is optionally available.



22/40 mm bottom frame with seal
Galvanized steel and SUS are
optionally available.




22/40 mm flat bottom frame
Galvanized steel and SUS are
optionally available.


Decorative Frame

Detail on Frame Design

Decoration frame in arc design



Decoration frame in flat design



· Easy for installation

· Quick treatment around opening after installation

· Available for both outward and inward opening doors

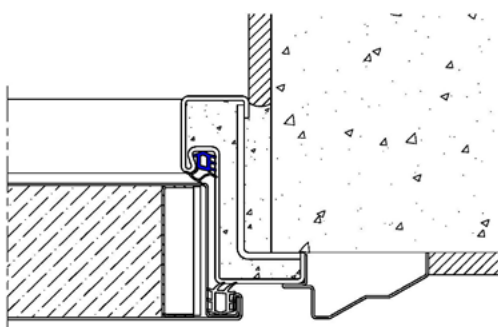
· Streamline design with 45 ° corner connection

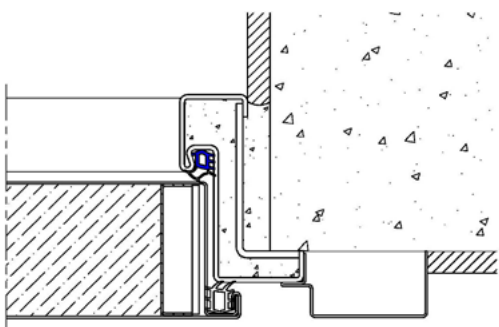
Decoration frame A

Decoration frame B

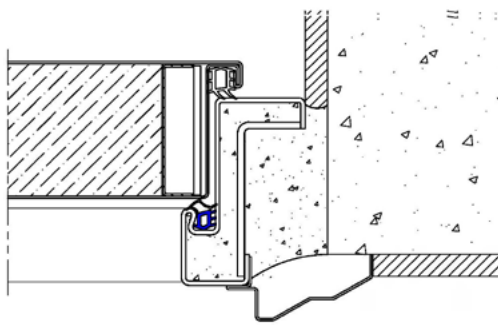
Fitting Method

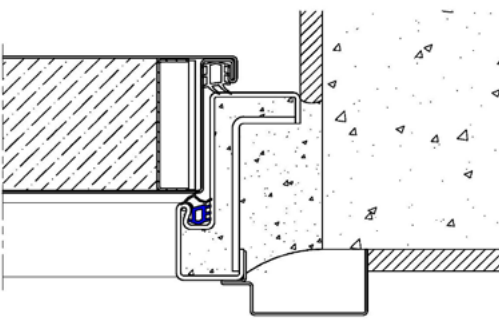
Outward opening





Inward opening





Decoration frame A

Decoration frame B

Hardware



SUS lock set

- With durable corrosion-resistant 304 SUS panel.
- Three-part silent latch.
- Three SUS dead bolts, which can be quickly released from inside.
- Indoor quick locking via independent button.



3D adjustable hinge

- Adjustable from three dimensions, easy for installation and maintenance.
- Made of 3.5 mm steel sheet, durable and sturdy.
- Oil-free self-lubricating design.



Security lever/knob handle set

- Available for silver and black surfaces.
- User-friendly design for comfortable operation.
- Anti-drill protection to prevent violent opening.

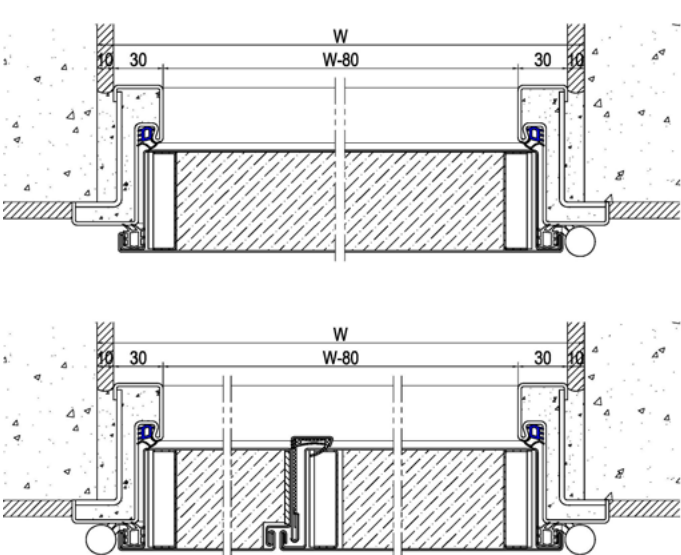
F100 F200 Optional

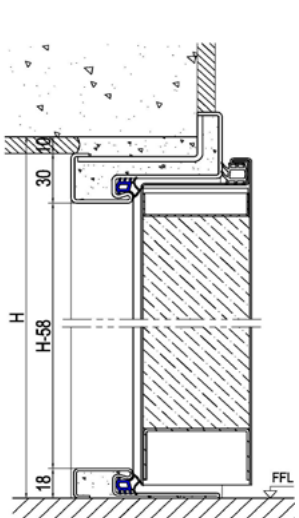


Spyhole (optional)

- 180° wide angle field of view.
- Certified for 90 min. fire-resistance testing in accordance with Chinese standard.
- Smooth and rust-resistant high gloss chrome treatment on the surface.

Technical Information





Theoretical clear passge width		
Single leaf	Outward opening, flush fitting along outside of wall	W-98 mm
	Inward opening, flush fitting along inside of wall	W-98 mm
	Inward opening, flush fitting along outside of wall	W-148 mm
Double leaf (Asymmetrical)	Outward opening, flush fitting along outside of wall	W-116 mm
	Inward opening, flush fitting along inside of wall	W-116 mm
	Inward opening, flush fitting along outside of wall	W-166 mm

▶ Corner frame as standard to achieve larger clear passage width and quicker treatment around frame after installation.



Hörmann Smart Lock *HSL 06*

Unlock via:

- Fingerscan
- Password
- Temporary Password
- MF1 card
- Smart app

Emergency unlock by:

- Spare key
- Type C Emergency Charging Interface

Available for:

- Standard version
- WiFi + bluetooth version
- NB-IoT + bluetooth version

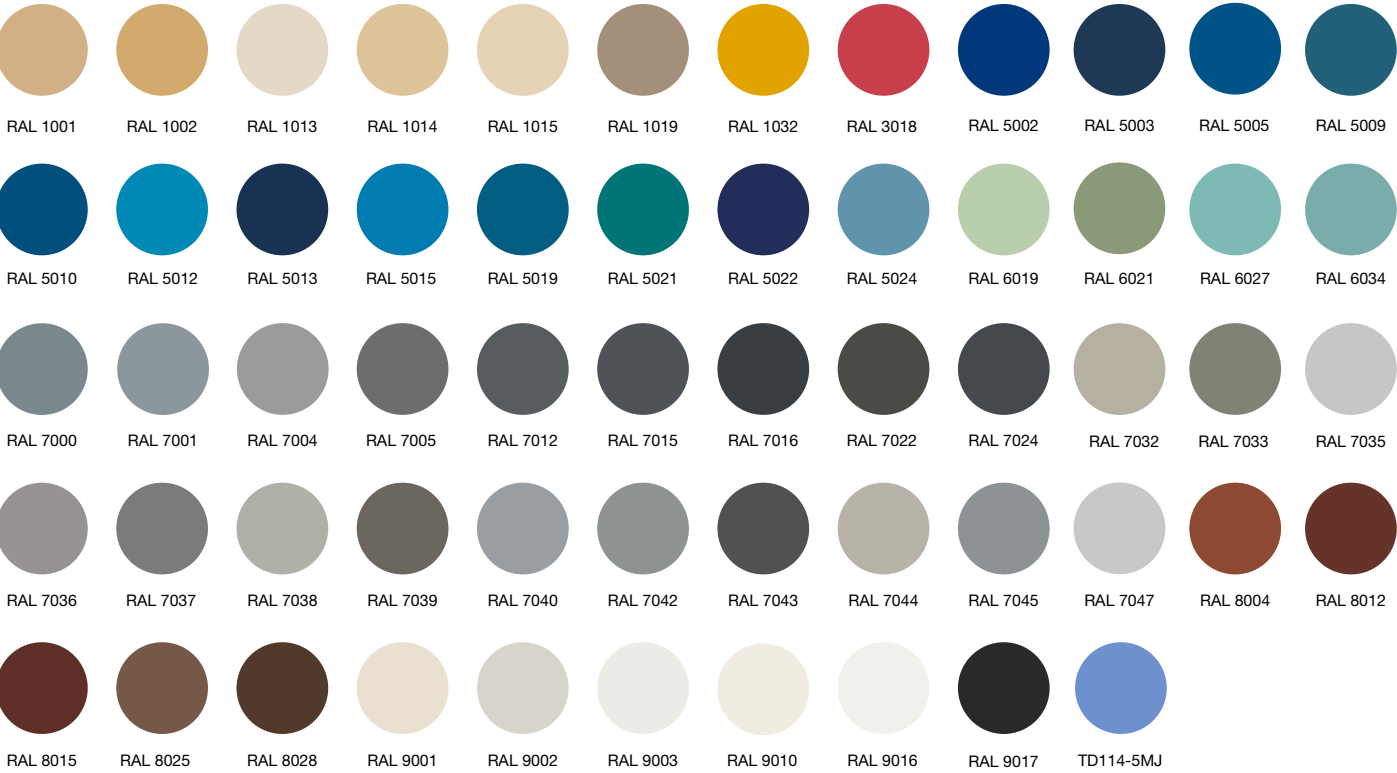
NB-IoT system is applied for unified backstage management of access control of rental apartment and campus dormitory etc, not for private users.

* Fire-rated certification is not available for HR60S door with smart lock

Powder Coating Surface

Advanced electrostatic powder coating technology ensures smooth surfaces with rich colours. This kind of solid-state powder is free of organic solvents, thus being beneficial for both environmental protection and human health.

Available for 58 standard colors and over 100 optional RAL colors, to match your unique taste of home decoration!

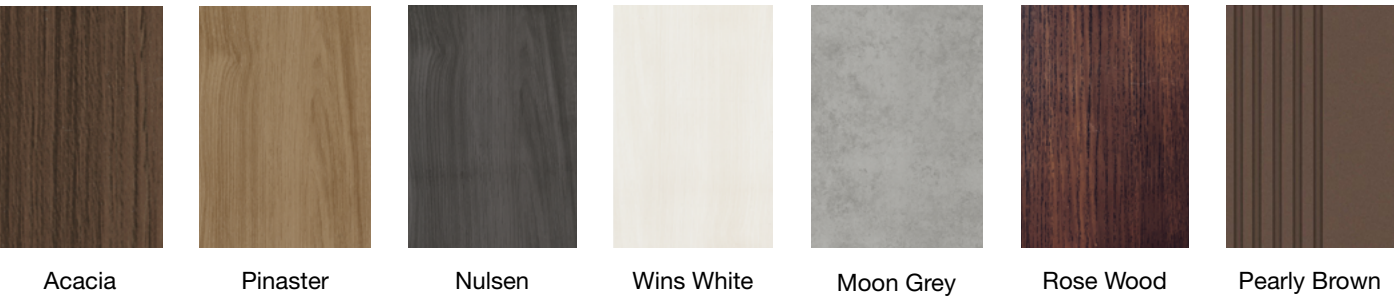


Silkgrain Surface

Environmentally-friendly durable 3D texture for healthy life

Silkgrain is a new steel sheet surface achieved by advanced 3D print pre-coating technology (PPM), overprinting layer by layer, presenting natural and realistic textures (such as brushed metal, slate stone, and wood grain) and 3D sense of touch.

All surfaces are environmentally friendly, in high wear resistance and excellent corrosion resistance. The surfaces comply with the requirements of REACH regulation SVHC testing, and are certified by RoHS environmental protection certification.



Decograin Surface

Various Decograin surfaces with flexible textures and colors, present diverse natural 3D patterns for your personal home decoration style.

The Decograin film pressed to whole steel sheet before cutting and bending by high-temperature hot pressing process leads to high strength and high adhesion, avoid the risk of peeling from the edge. It is also certified by German SKZ, guaranteeing excellent outdoor weather resistance to keep long-lasting bright colors on your doors.



Three series of surfaces, over a hundred types of Color Coating surfaces and dozens of Decograin surfaces available for your home decoration.

*The colors shown are subject to the limitations of the printing process and cannot be regarded as binding. Contact your Hörmann specialist dealer for advice regarding colored doors.

Hörmann: Quality without Compromise



Hörmann KG Amshausen, Germany



Hörmann KG Antriebstechnik, Germany



Hörmann KG Brandis, Germany



Hörmann KG Brockhagen, Germany



Hörmann KG Dissen, Germany



Hörmann KG Eckelhausen, Germany



Hörmann KG Freisen, Germany



Hörmann KG Ichttershausen, Germany



Hörmann Alkmaar B.V., Netherlands



Hörmann Legnica Sp. z o.o., Poland



Hörmann LLC, Montgomery IL, USA



Hörmann Flexon LLC, Burgettstown PA, USA



Hörmann Beijing, China



Hörmann Tianjin, China



Hörmann Changshu, China



Shakti Hörmann Ltd. India

Hörmann is a professional manufacturer worldwide that offers you a complete range of major building products from one source. We manufacture in specialized factories using the advanced production technologies. The comprehensive manufacturing, sales and service network in Europe, Asia and America makes Hörmann your strong international partner for the high-quality construction. "Quality without Compromise".

GARAGE DOORS

OPERATORS

HINGED DOORS

PARTITION WALLS

INDUSTRIAL DOORS

LOADING TECHNOLOGY

All information and images are protected by copyright. No part of this brochure may be reproduced without our permission. Subject to changes.

Print: 09. 2023 (Issue: 09. 2023)
Some of the doors shown in this brochure have special features and therefore do not always represent the standard version.

www.hoermann.cn

